

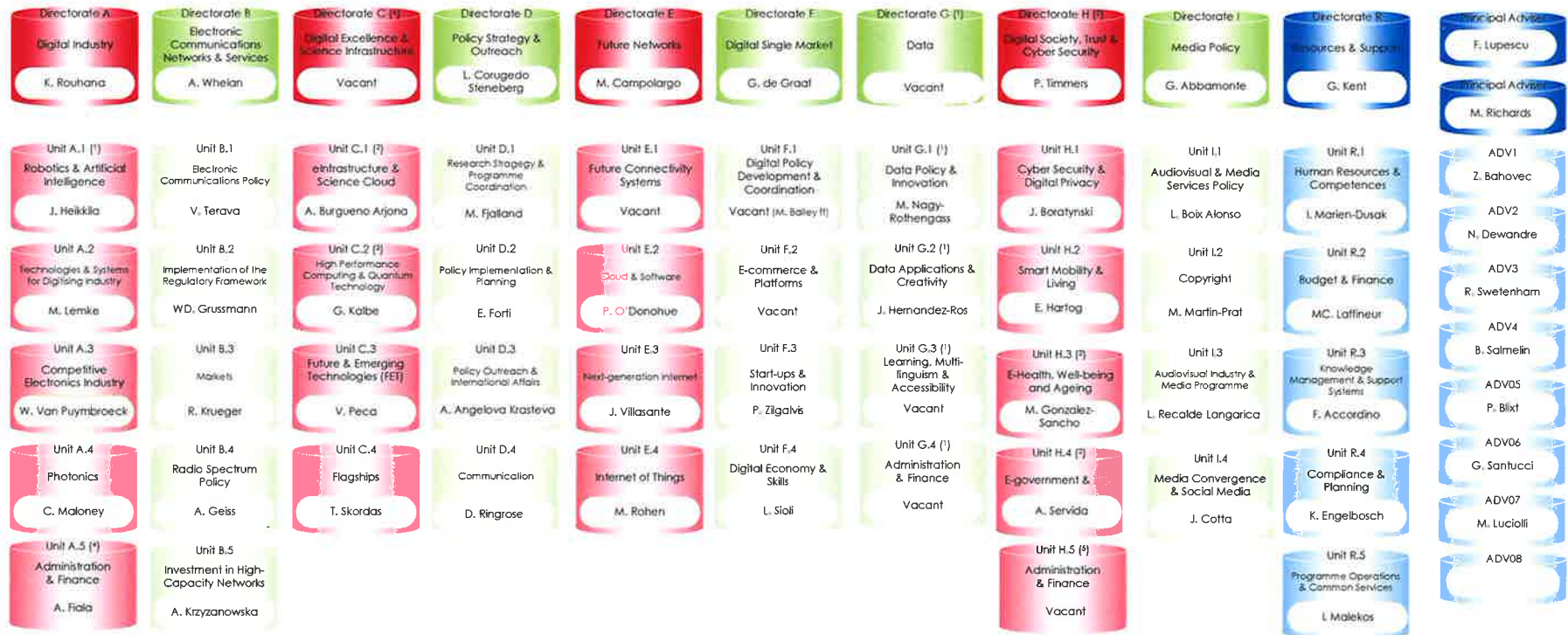


DG CONNECT
Communications Networks,
Content & Technology

Deputy
 Director-General
 G. Kent (Acting) ☎ 91945
 Assistant
 E. Miljana ☎ 81149

Director-General
 R. Viola ☎ 60240
 Assistants
 O. Binger ☎ 92067
 P. Stuckmann ☎ 21097

Deputy
 Director-General
 C. Bury ☎ 60499
 Assistant
 F. Lamotte ☎ 98992



Reporting lines are:
 - R. Viola for Directorate R;
 - ex Z. Stančič for Directorates A, C, E, H;
 - C. Bury for Directorates B, D, F, G, I.

(1) Luxembourg.
 (2) Transferred to Luxembourg in 2018.
 (3) Transferred to Luxembourg.
 (4) Shared Administration & Finance Unit for Directorates A, B, C, D and F.
 (5) Shared Administration & Finance Unit for Directorates E, H and I.
 (6) Publication of vacant post for Luxembourg.

Mini-Unit REA.3.5
 Fostering Novel Ideas: FET-Open
 T. Hallantie ☎ 68167

Mini-Unit REA.3.2
 Creative Europe: MEDIA
 H. Trettenbrein ☎ 84955

Mini-Unit REA.3.4
 Expert Contracting & Payments
 A. Oram ☎ 97805